

# MEILI ROBOTS

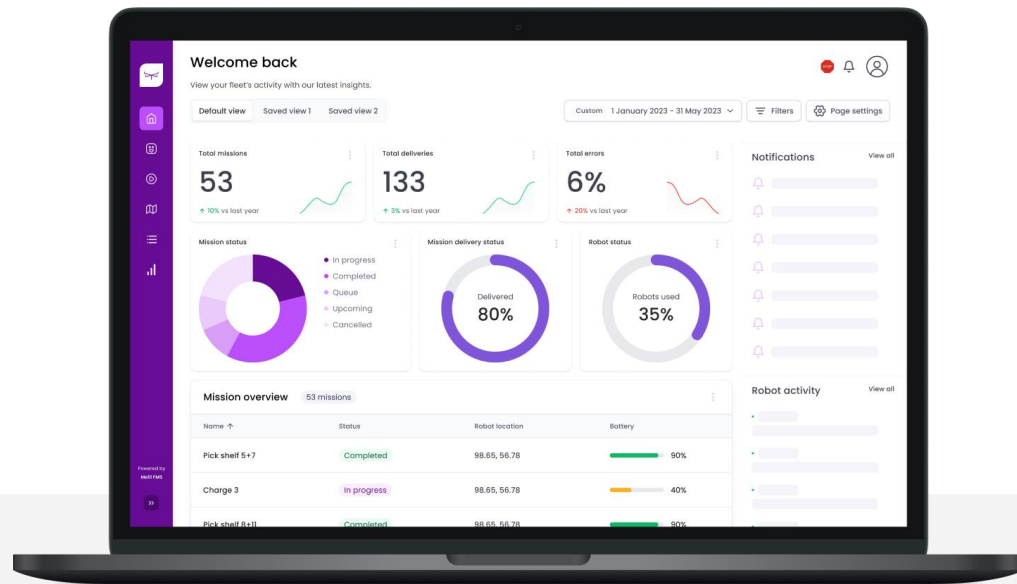


*Mobile Robotics Summit 2024*

09/10/2024

MEILI FMS

# UNIVERSAL FLEET MANAGEMENT SYSTEM FOR MOBILE ROBOTS.



- Collate all mobile robots onto **one platform** (single or mixed vendor fleets)
- Enable **traffic control**, facilitate **automated task allocation**, and **smart route planning**
- Seamlessly integrate with **third-party systems**



## CURRENT ISSUE

# IN THE MARKET.

The growing **demand for mobile robots** and the **diversification** of robotic fleets are driving the need for **interoperability** in the robotics industry.

## MEILI FMS

# TOP 3 BENEFITS.

## 01 OEM Independency

Freedom to add any robot type or brand to your existing fleet.

## 02 Cost Effectiveness

Lower prices than OEMs and increased revenue opportunities through licensing.

## 03 Future Readiness

Grow and scale your business in the future and have options of robots when making such decisions.

# OUR FEATURES.



## MISSION MANAGEMENT

Manual, scheduled, and automated tasking.



## OVERVIEW

Get a bird's-eye view of fleet productivity.



## TRAFFIC CONTROL

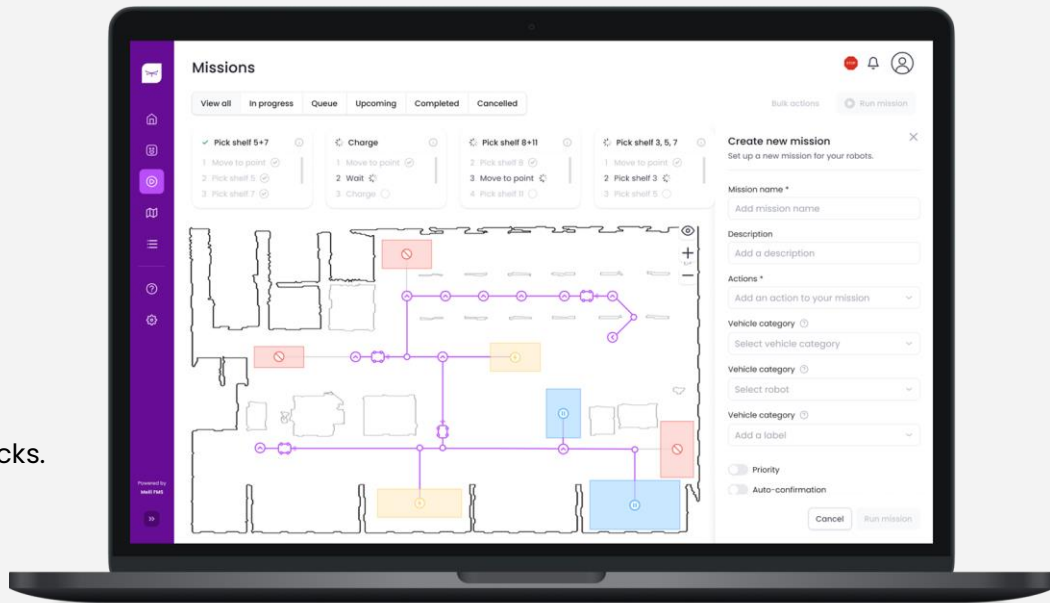
Regulate traffic. Detect and predict bottlenecks.



## ROUTE PLANNING

Smart routing to prevent obstructions or delays.

We offer a **universal** Fleet Management System (FMS) for **mobile robots**. A digital solution: an **all-in-one platform** that is capable of handling **different kinds of mobile robots**, called Meili FMS.



## TECH STACK

# BUILT FOR ADAPTABILITY.

- **Cloud-based** solution with the option for **on-premise**
- Built with interoperability in mind, we are **VDA5050 + ROS** compatible (ROS1 + ROS2)
  - Built-in tools for **proprietary** solution compatibility
- Integrations can be achieved via **REST API**
- Communicate with external devices through **MQTT, websocket** or **REST API**
- Scale with **Kubernetes** and **Docker** containers
- Capability of integrating with **RTLS** or **similar** to enable safer traffic control



## CORE OFFER

# OUR VALUE PROPOSITIONS.

By using **Meili FMS's** service, users can finally use their **mobile robot fleet** to its **full potential** and spend more **time** growing their **business**.



### CONTROL

Control Your Entire Fleet in One Platform



### INTEGRATE

Seamlessly Integrate with 3<sup>rd</sup> Party Systems



### ANALYSE

Real-time Analysis & Reporting



### SCALE

Flexible, Agile, Scalable Solution & Pricing



### SIMPLIFY

Intuitive UI That Requires Zero Training



### ACTIVATE

Set Up Quickly & Easily

## TIMELINE

# BUSINESS TRACTION.

1. Recognised by **key industrial companies**
2. Feedback from users shows that our platform is **ready** and **dependable**
3. Support from a growing list of **OEMs**
4. We are **innovative** and **ahead of the curve**



# CONTACT US.

We know you've got questions.  
We're here to answer.

## GET IN TOUCH

[info@meilirobots.com](mailto:info@meilirobots.com)

## FOLLOW US

[meilirobots.com](http://meilirobots.com)

[linkedin.com/company/meilirobots](https://www.linkedin.com/company/meilirobots)

